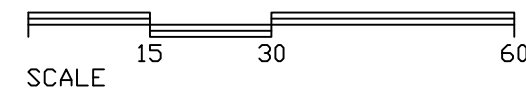


1526 BUILDING
LINCOLN

LOWER LEVEL FLOOR PLAN



December 2019

		AREA
Rentable Office Space		7,277
65.08 Personnel		3,417
65.08 Bay 1		444
65.04 Bay 2		340
65.04 Bay 3		236
65.04 Bay 4		338
75 Bay 5		232
65.05 Bay 6		188
65.04 Bay 7		150
63 Bay 8		180
65.01 Bay 9		406
18 Bay 10		404
19 Bay 11		330
85 Bay 12		406
65.02 Bay 13		206
Common Space		5,033
Service Space		10,737
TOTAL SQ. FT.		23,047

SPACE ALLOCATION

1526 K Street, LL
Lincoln, NE

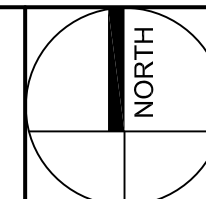
DRAWING APPROVAL

POC _____ DATE _____
DESIGNER _____ DATE _____

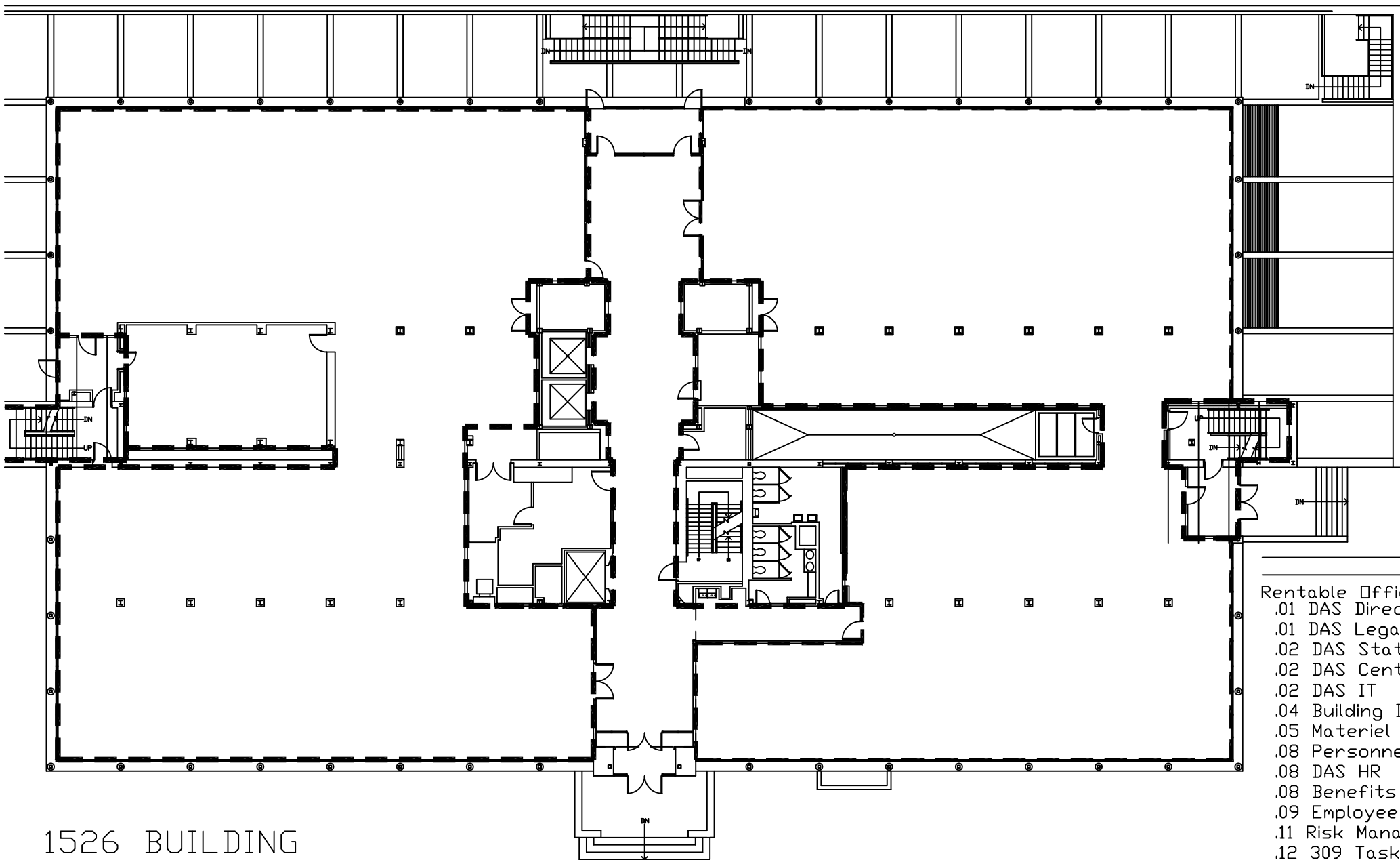
DATE: 11/29/22

DRAWN: ---

SCALE: 1/4" = 1'-0"

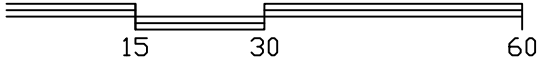


W:\DESIGN & PLANNING\1526 K Street (Woodmen)\WOODLL.dwg



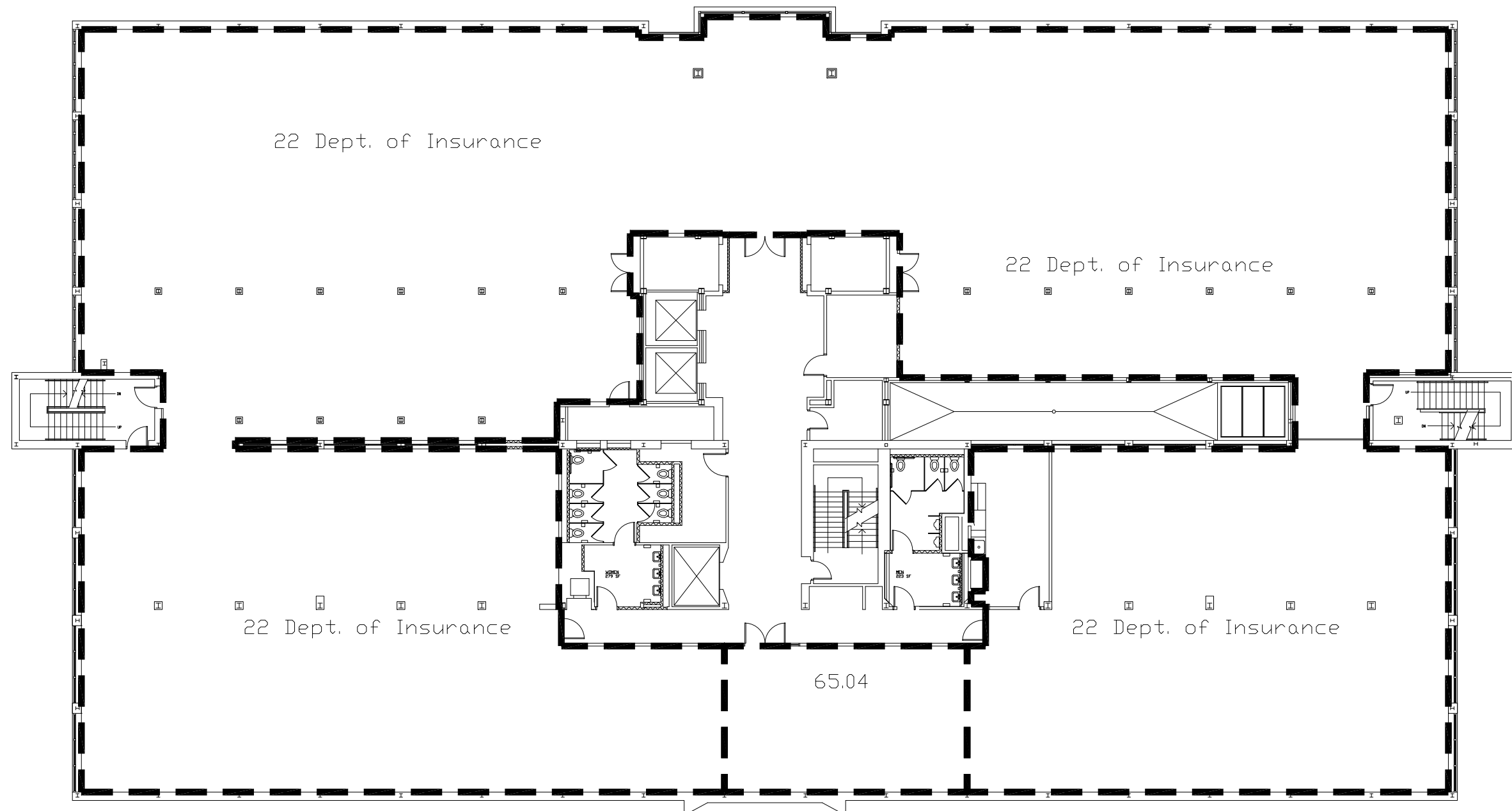
1526 BUILDING
LINCOLN

FIRST FLOOR PLAN



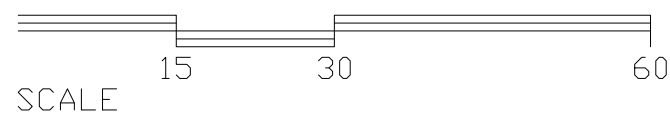
May 2021

	AREA
Rentable Office Space	17,245
.01 DAS Director's Office	1,285
.01 DAS Legal	182
.02 DAS State Accounting	1,606
.02 DAS Central Finance	1,229
.02 DAS IT	708
.04 Building Division	2,202
.05 Materiel	778
.08 Personnel	1,390
.08 DAS HR	872
.08 Benefits	0
.09 Employee Relations	540
.11 Risk Management	343
.12 309 Task Force	181
.00 Shared Office Space	5,929
Common Space	1,722
Service Space	3,474
TOTAL SQ. FT.	22,441



1526 BUILDING
LINCOLN

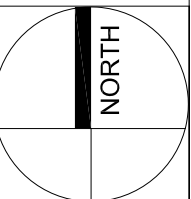
SECOND FLOOR PLAN

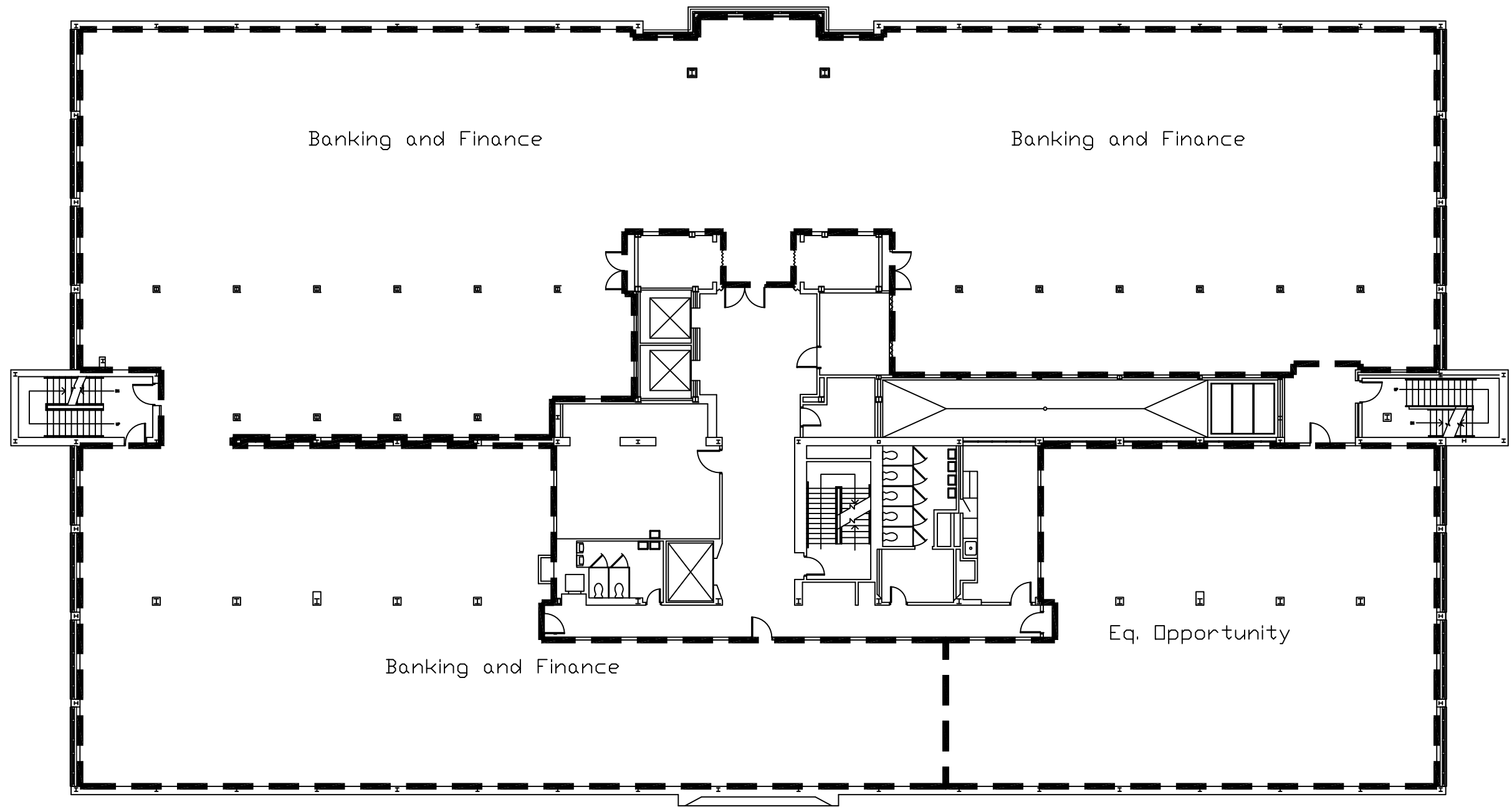


SCALE

January 2022

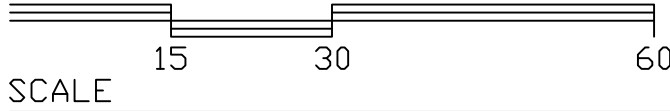
		AREA
Rentable Office Space		18,866
22 Dept. of Insurance	18,086	
65.04 Conference Room	780	
Common Space	1,749	
Service Space	2,588	
TOTAL SQ. FT.		23,203





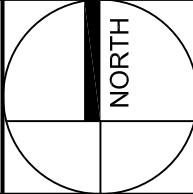
1526 BUILDING
LINCOLN

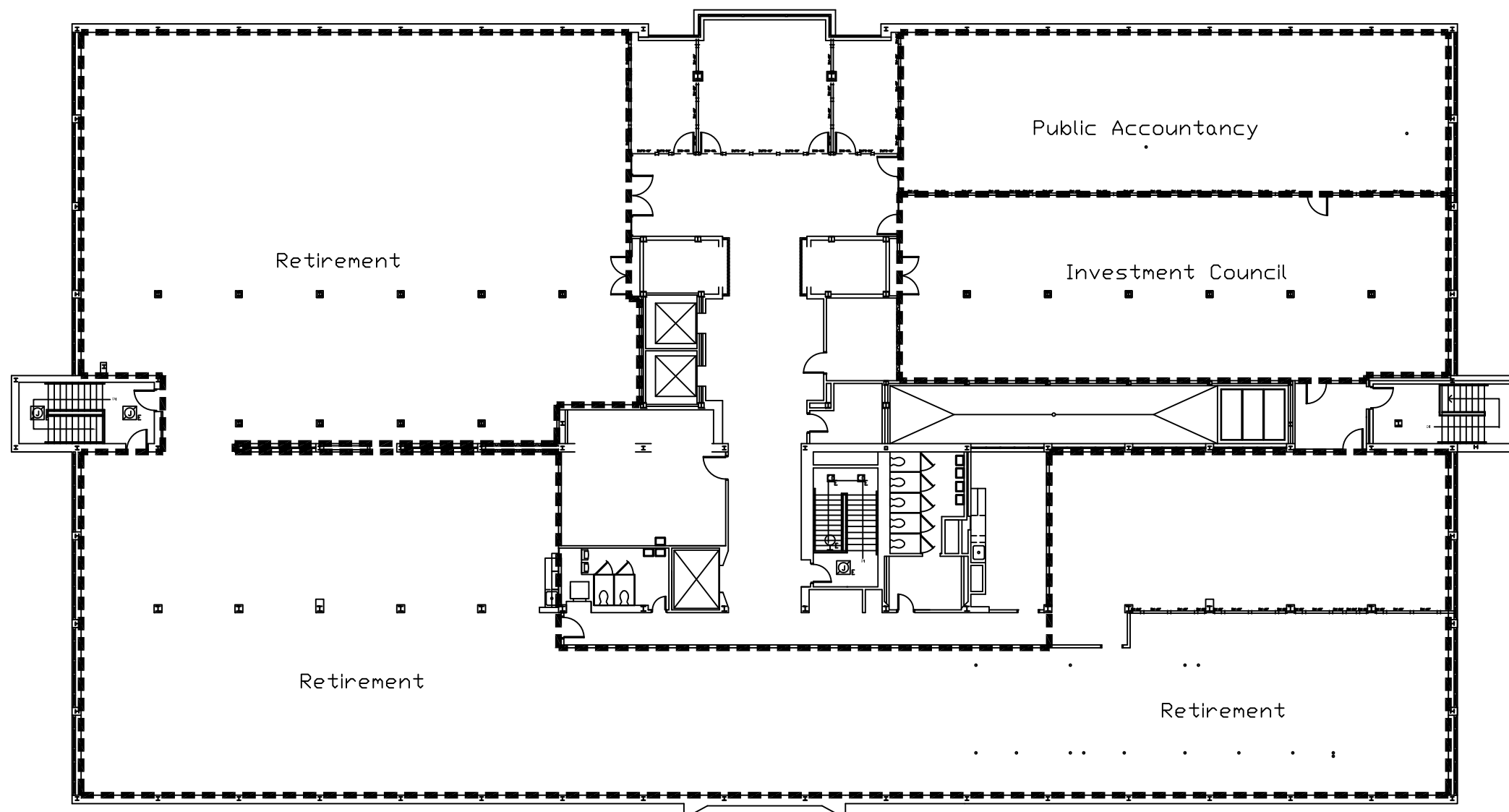
THIRD FLOOR PLAN



March 2021

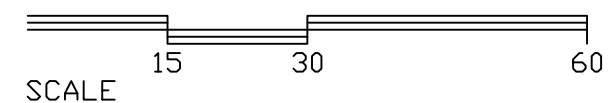
	AREA
Rentable Office Space	18,494
19 Banking and Finance	15,180
67 Eq. Opportunity	3,314
Common Space	1,945
Service Space	2,761
TOTAL SQ. FT.	23,200





1526 BUILDING
LINCOLN

FOURTH FLOOR PLAN



	AREA
Rentable Office Space	17,217
85 Retirement	13,025
63 Public Accountancy	1,950
75 Investment Council	2,242
Common Space	3,101
Service Space	2,882
TOTAL SQ. FT.	23,200

